

From *syndromic surveillance* towards *data-driven surveillance*

Fernanda C. Dórea

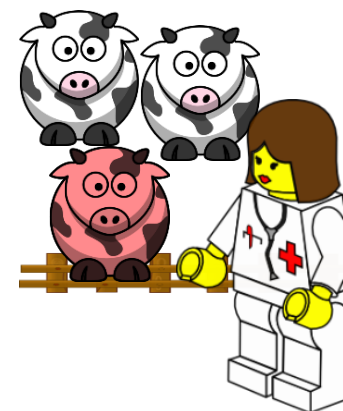


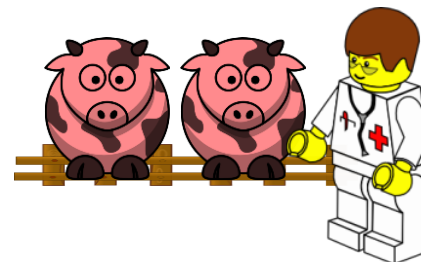
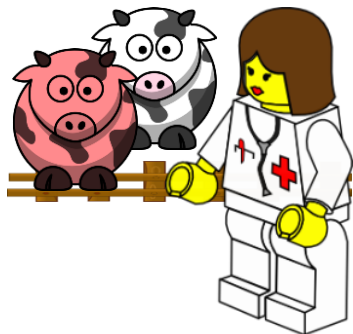
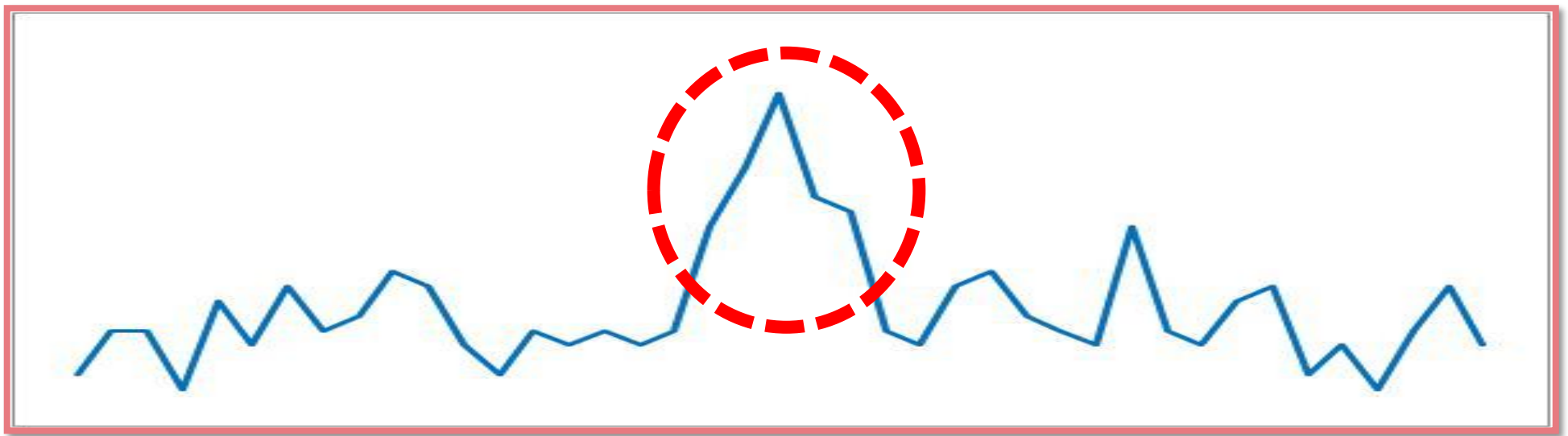
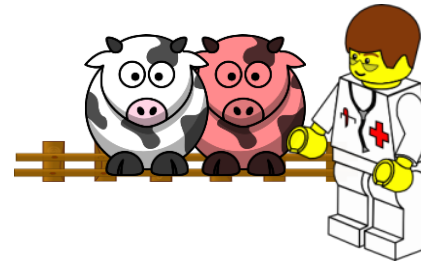
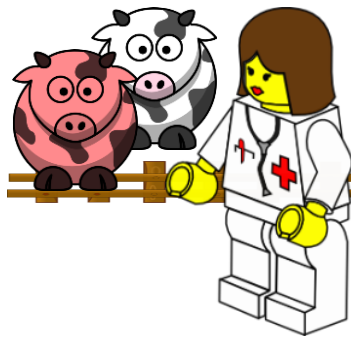
SVA

WHAT IS "SYNDROMIC SURVEILLANCE"



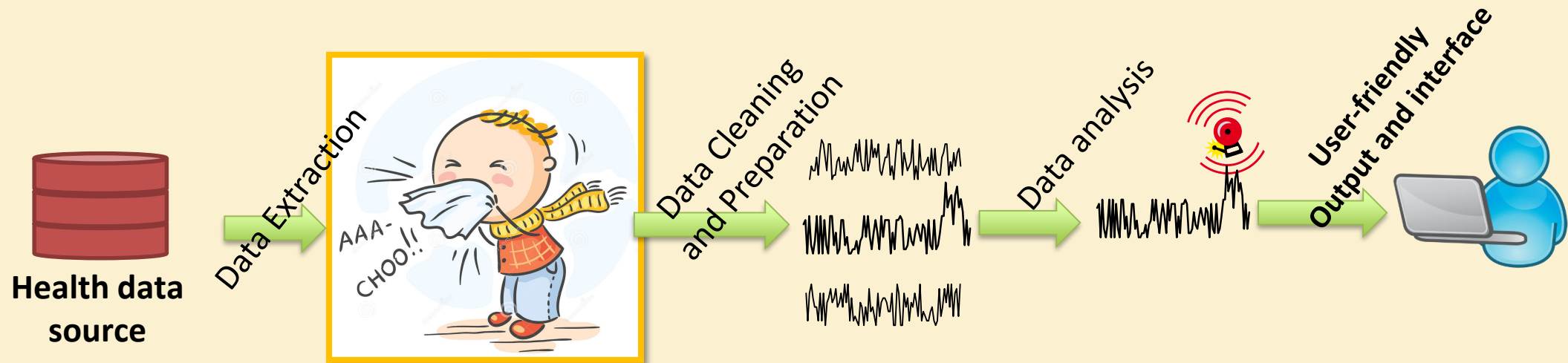
- Syndromic surveillance, CDC, 2006
 - ***approaches*** which make use of “health-related data that **precede diagnosis** and signal with sufficient probability of a case or an outbreak to warrant further public health response”



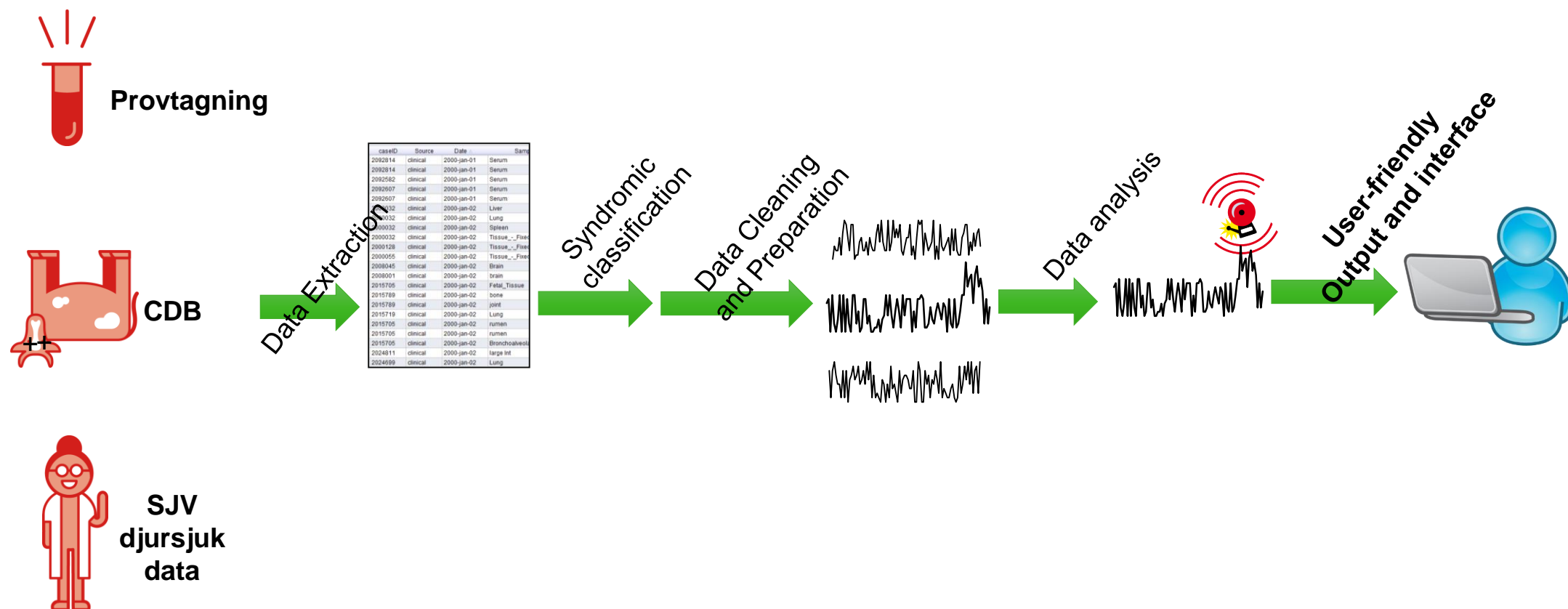




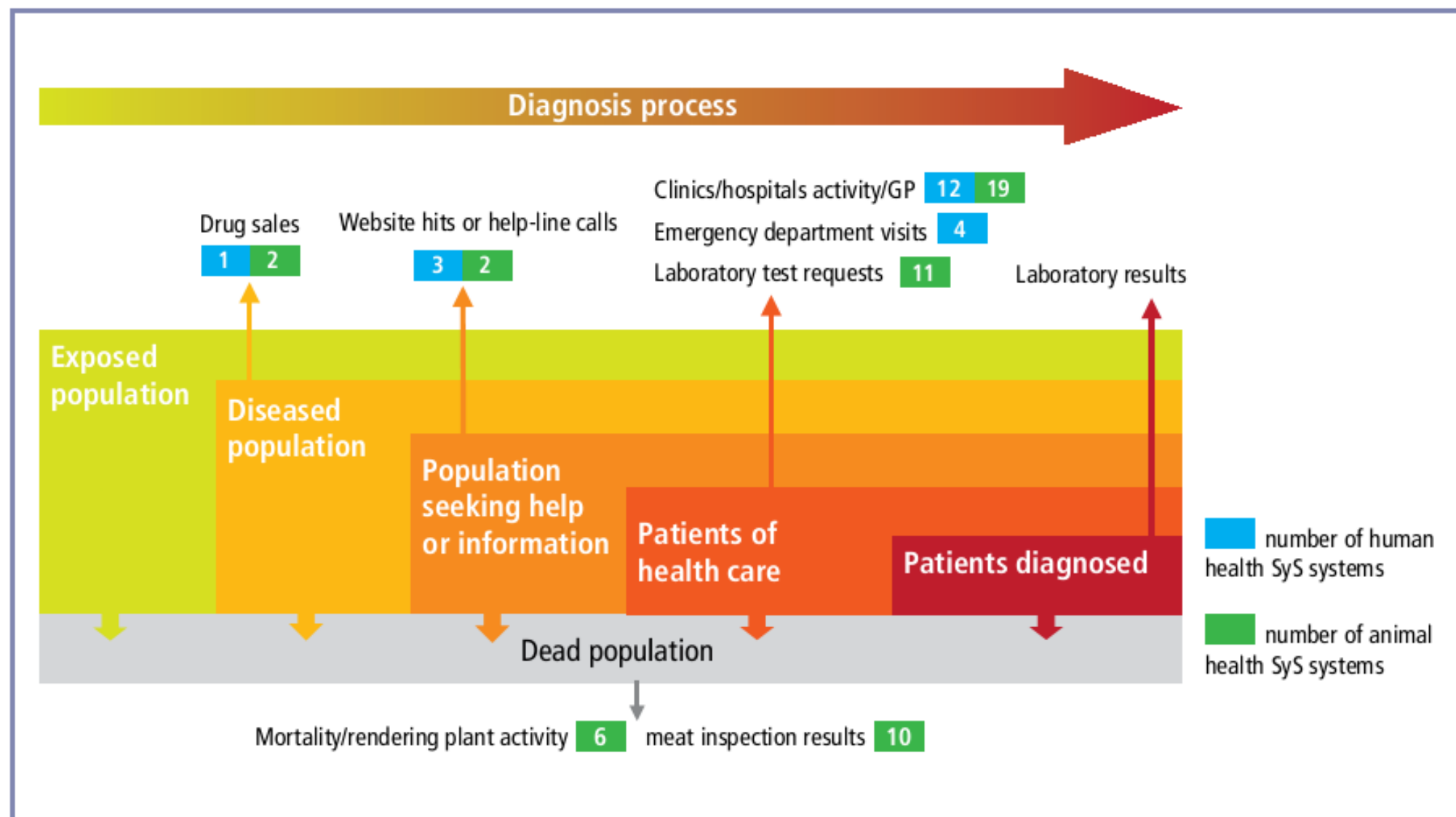
HOW IT IS DONE



SYNDROMIC SURVEILLANCE AT SVA



European human and animal SyS systems by data source

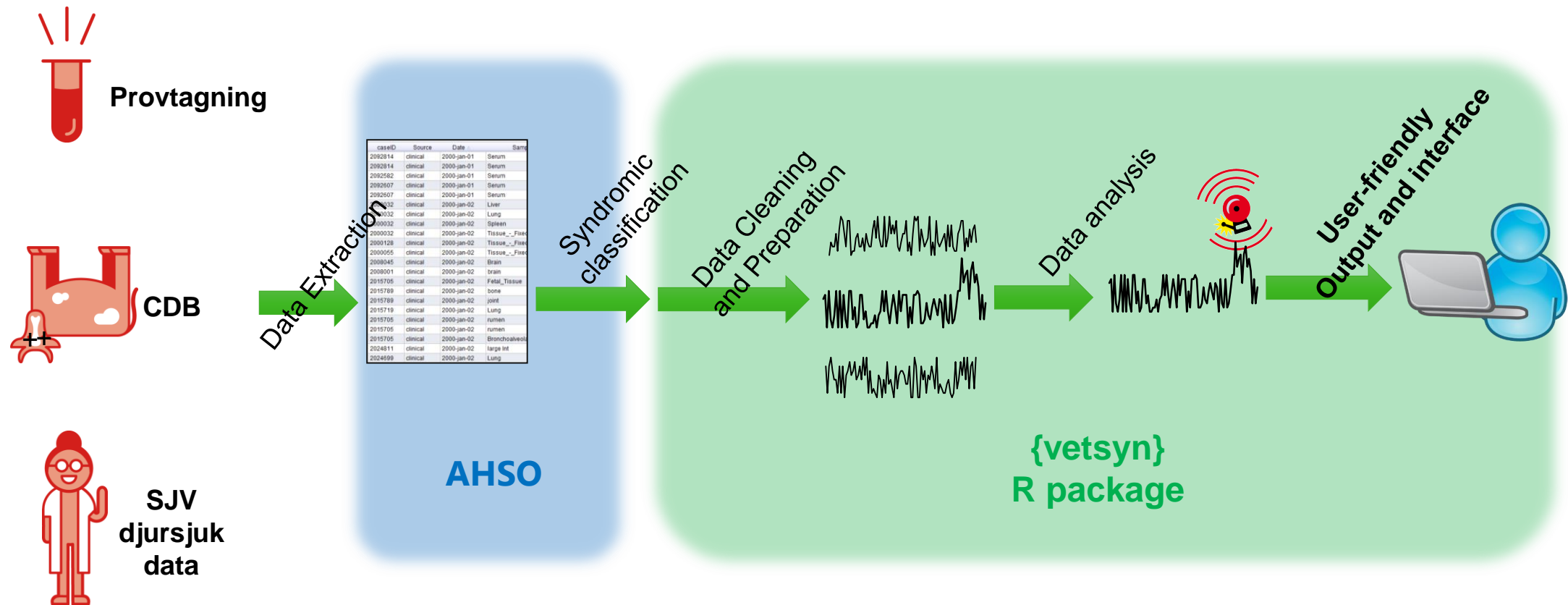


WHAT IS "SYNDROMIC SURVEILLANCE"

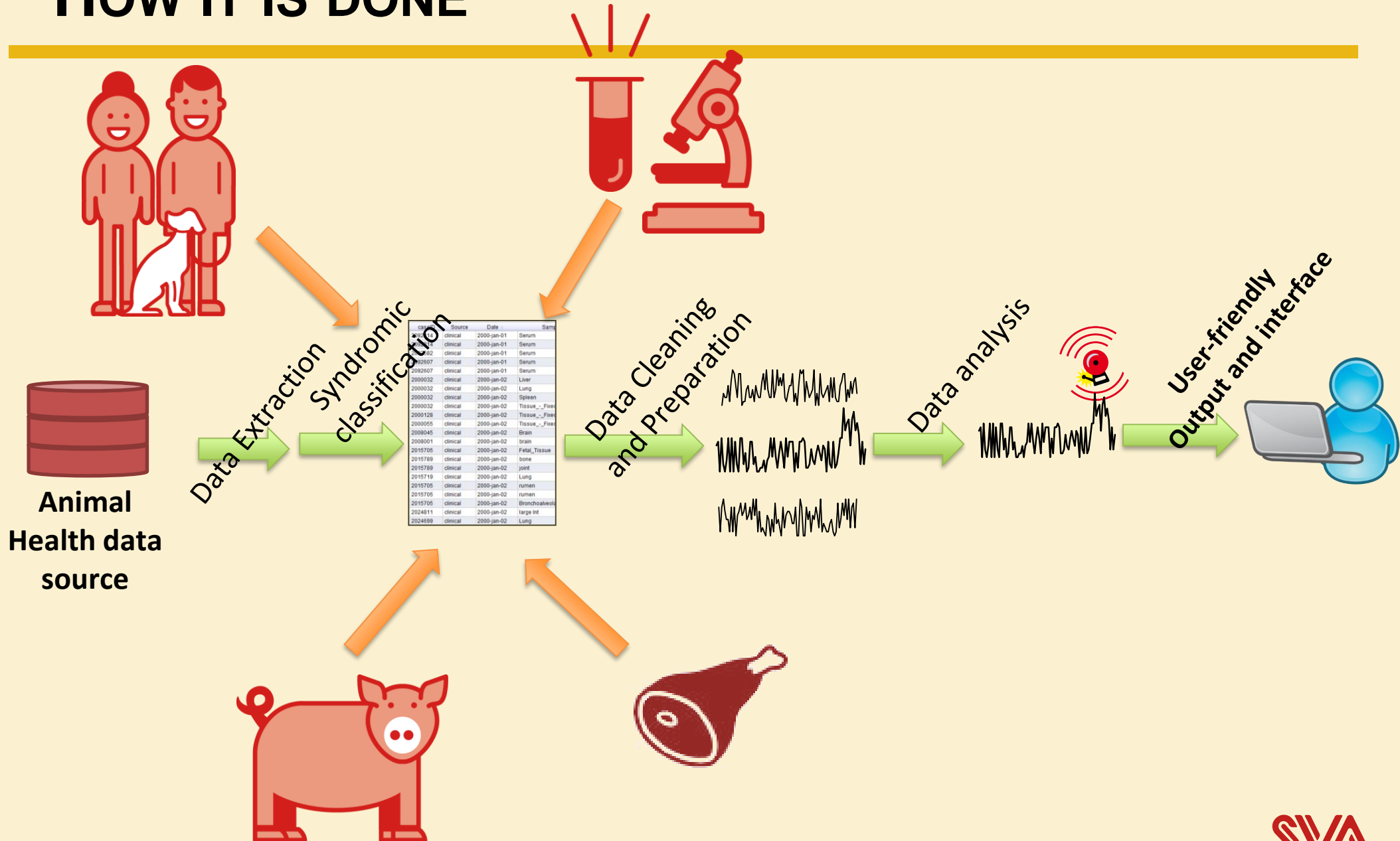


- Syndromic surveillance, CDC, 2006
 - ***approaches** which make use of “health-related data that **precede diagnosis** and signal with sufficient probability of a case or an outbreak to warrant further public health response”*
- Syndromic surveillance, Triple-S, 2013
 - *the **real-time (or near real-time)** collection, analysis, interpretation and dissemination of **health-related data** to enable the early identification of the impact (or absence of impact) of potential human or veterinary public-health threats which require effective public health action*

SYNDROMIC SURVEILLANCE AT SVA

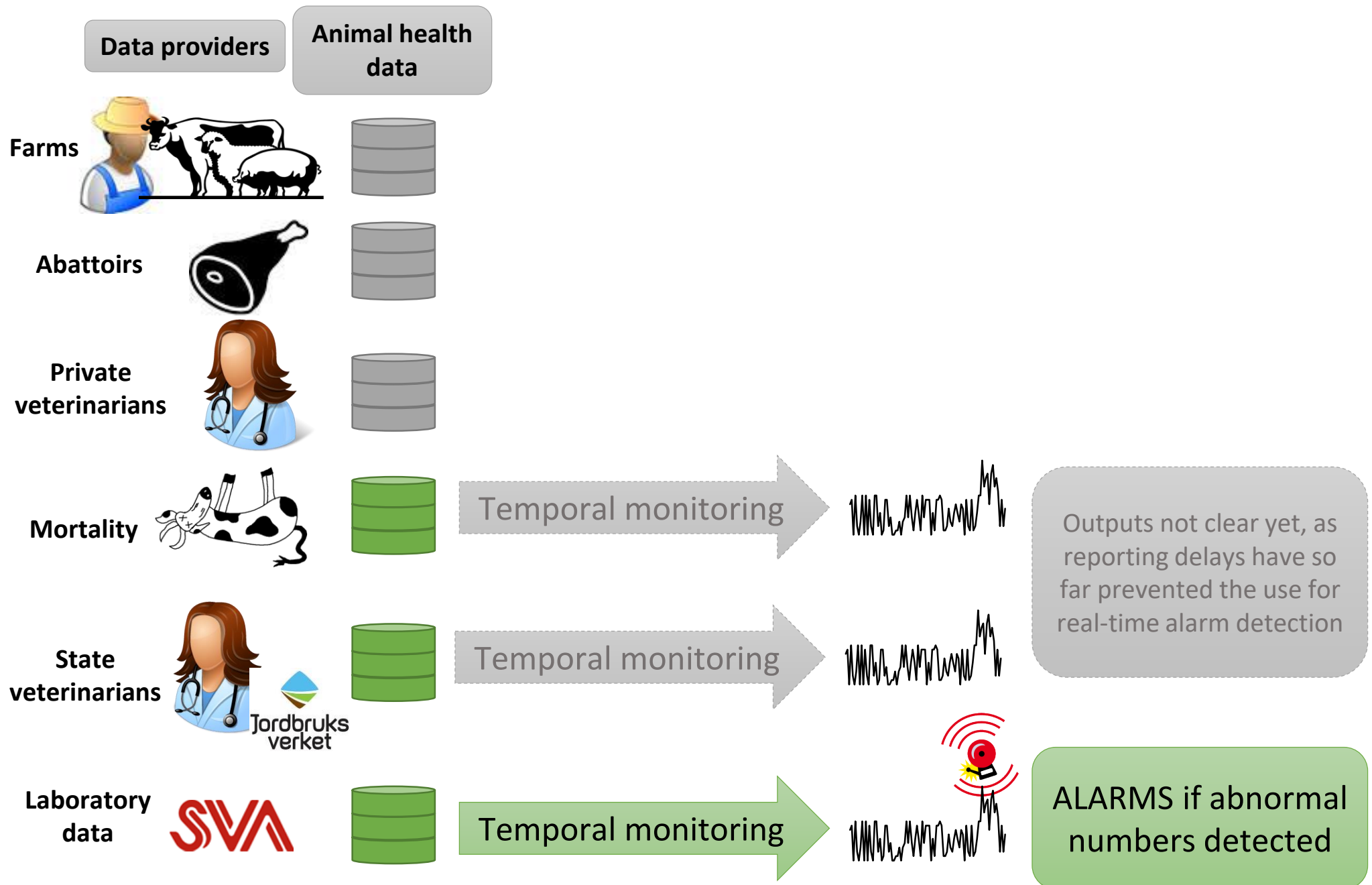


How IT IS DONE

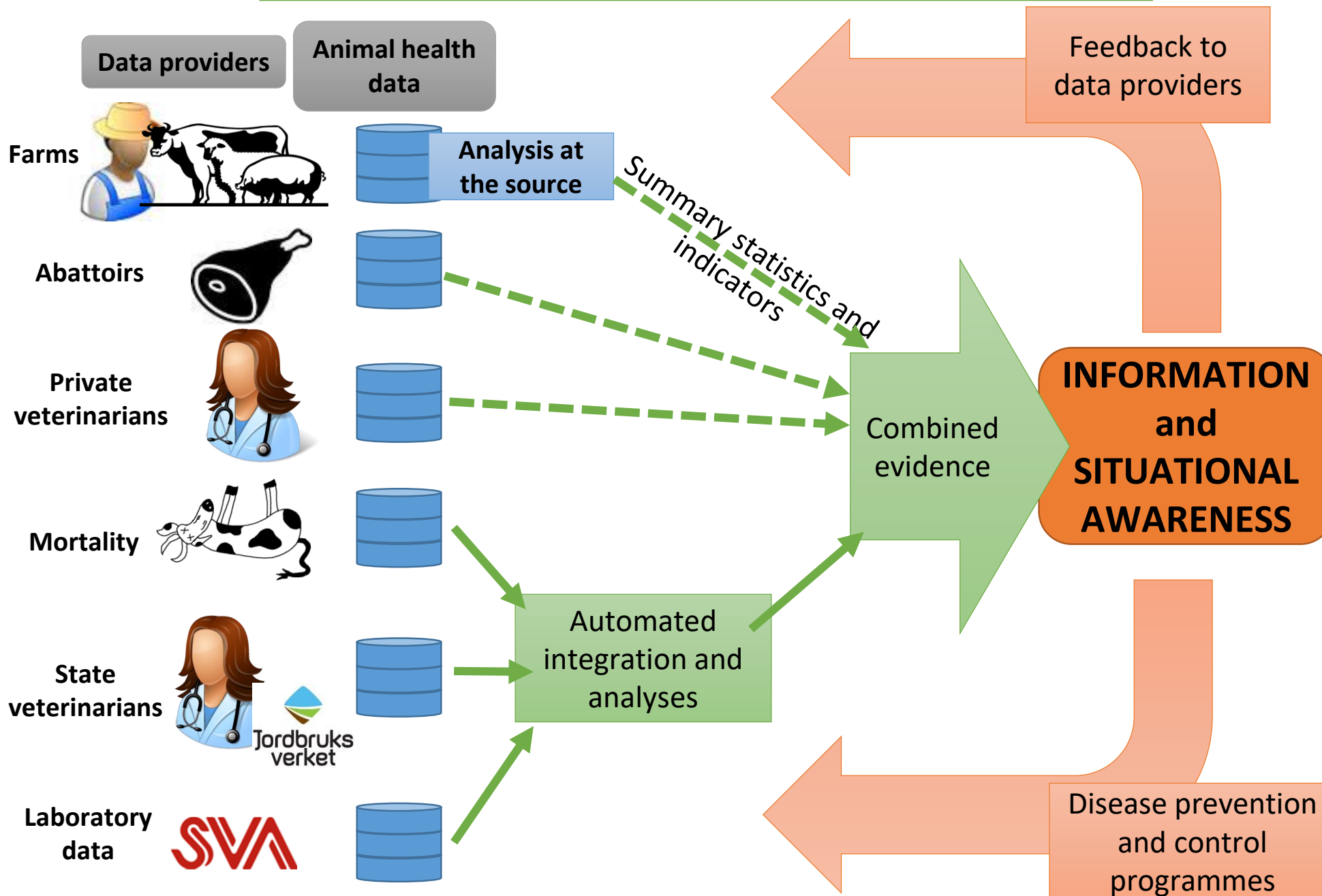


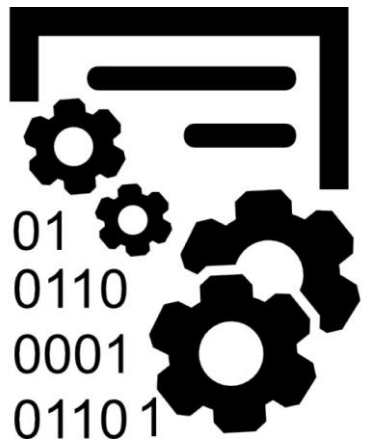
Veterinary syndromic surveillance

Current framework: DATA in → ALARMS out (parallel streams)



Epidemiological Intelligence Framework





Data



Information



Knowledge



Understanding

*Epidemiological data collection is about
technology, but effective disease
surveillance is about people*

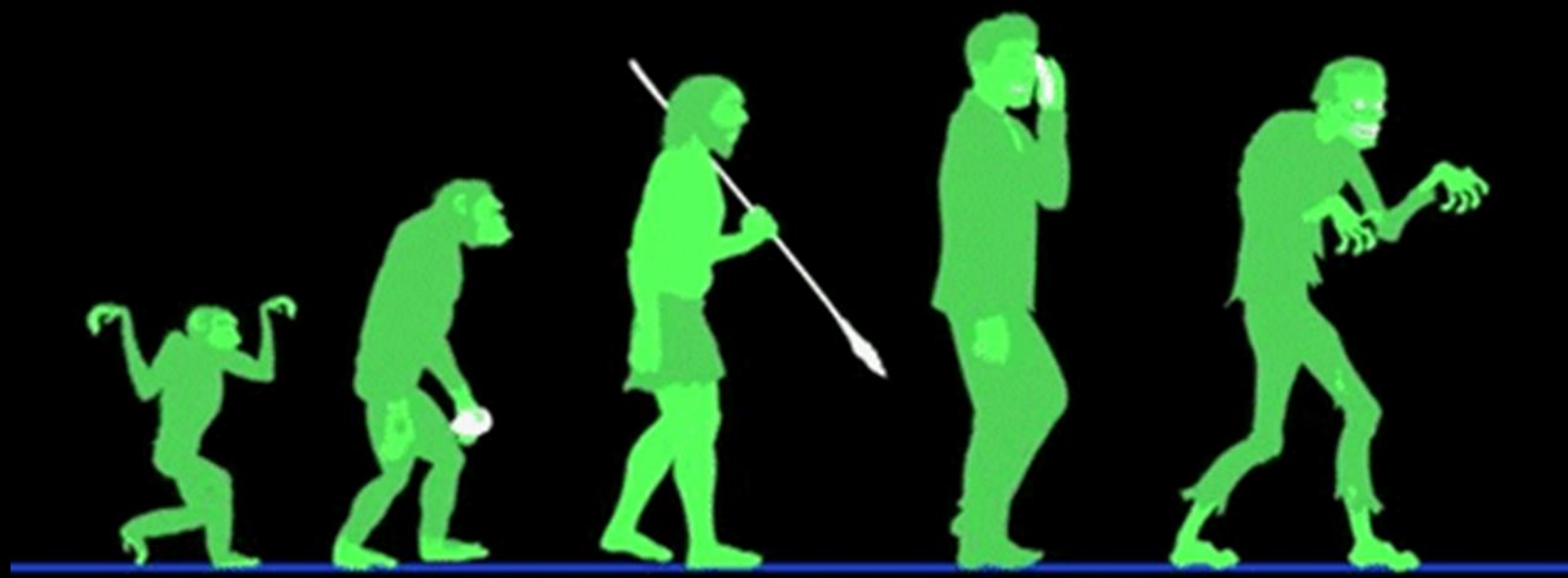
People matter in animal disease surveillance: Challenges
and opportunities for the aquaculture sector

Cecile Brugere
Dennis Mark Onuigbo
Kenton LI. Morgan

SURVEILLANCE CHALLENGES



- Evolving environment
- Evolving problems



DATA-DRIVEN SURVEILLANCE



- Smarter data
- Smarter systems
- Support decision makers
 - Surveillance design
 - Contribute to evidence and outcomes from surveillance
- Situational awareness in real-time
- Evolving problems and questions

datadrivensurveillance.org



THANK YOU!

nanda@datadrivensurveillance.org

